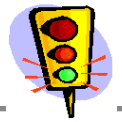


PoleForeman - Pole Loading Analysis Report

License: Alpine Communication Corp

Version 7.4.17



POLE LOADING DATA

Pole: 45/1 Wood (Wood-Cylindrical)

Soil: None

Pole Loading

NESC Edition: 2012

Rule 250B: Temp=30F, Wind=9 psf, Ice=0 in

Horizontal: 55% (250B)

Loading District: Light

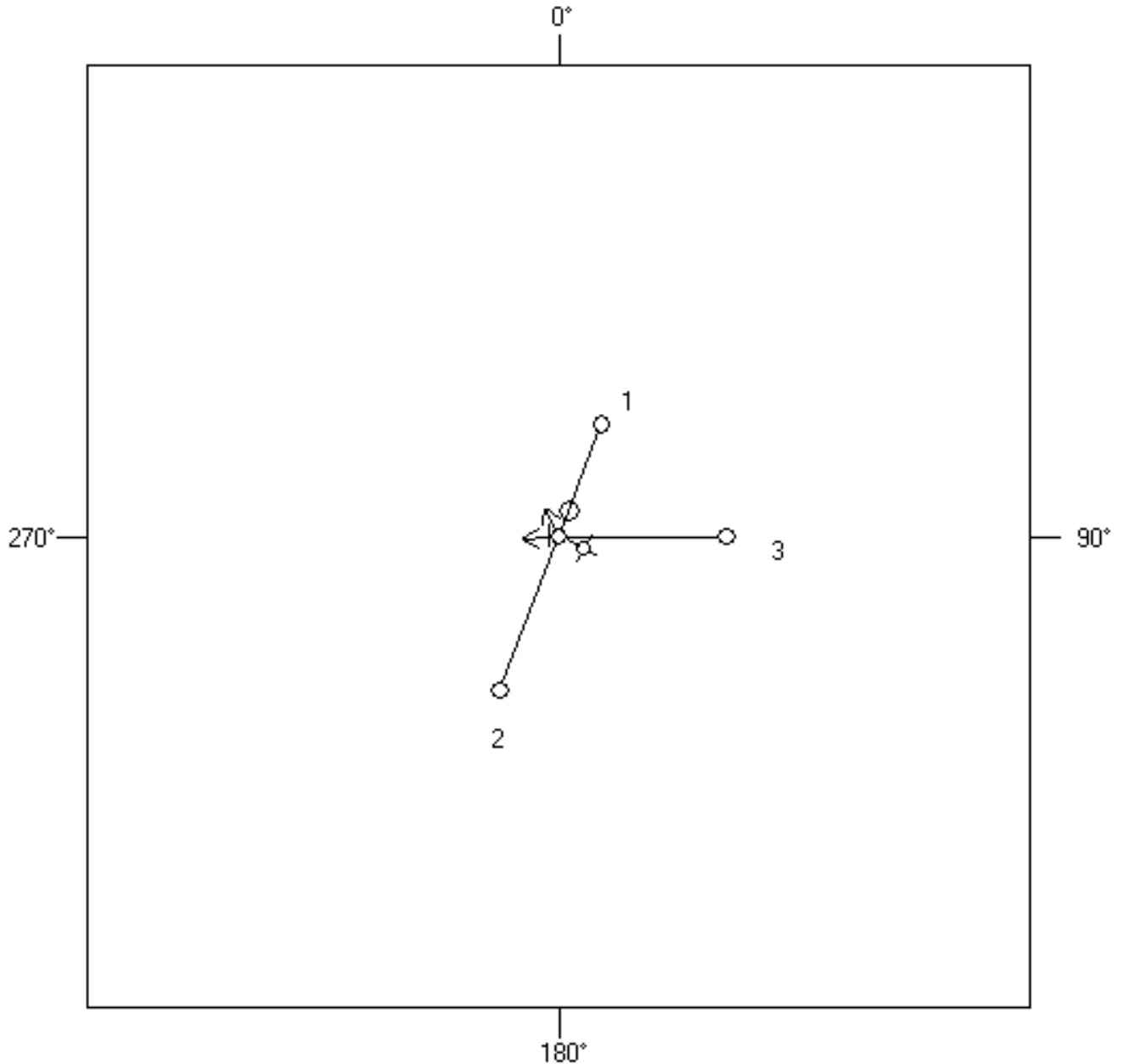
Vertical: 12% (k=0.70)

Construction: Grade B

POLES

Pole #	Length (ft)	Depth (ft)	Elevation (ft)
0	45	7	0
1	45	6.5	0
2	45	6.5	0
3	45	6.5	0

POLE LINE TOPOLOGY



PoleForeman - Pole Loading Analysis Report

License: Alpine Communication Corp

Version 7.4.17

GUY STRAND DATA

Anchor	Strand	Attach	Length	Direction	Tension	Strength	Loading
1	9/16" EHS	31.8'	10'	270°	12,350	30,330	41%
1	9/16" EHS	25.3'	10'	270°	9,697	30,330	32%

ANCHOR DATA

Anchor	Rod	Anchor	Soil	Tension	Rod Strength	Anchor Strength
1	None	None	None	22,033	0	0

INSULATORS

Insulator	Attach	Loading	Angle
45KV Post Tie Polymer	37.5'	9%	0°
45KV Post Tie Polymer	36.6'	9%	0°
45KV Post Tie Polymer	33.9'	9%	0°
45KV Suspension Polymer-DE	31.8'	25%	0°
Spool-Sm-Tangent	26.3'	3%	0°

ARM / BRACKET DATA

Arm/Bracket	Attach	Vert Loading	Horz Loading
Post Top Bracket	37.5'	3%	30%
Pole-Wood Adapter	36.6'		
Pole-Wood Adapter	33.9'		
Fork-Extended	26.3'		

SPANS

Span: 1 **Span Length (ft): 115** **Direction: 21°**

Circuit: 1 3PH-TAN-Mod Ver-Wood Pole-45KV PC Hor-E-5.0.0 F1

Primary	Ruling Span (ft)	Offset (in)	Attach A (ft)	Attach B (ft)	Tension
568 ACAR (15/4)	250	21	36.8	37.3	4530
568 ACAR (15/4)	250	4	39.7	40.2	4530
568 ACAR (15/4)	250	20	34.1	34.6	4530
Neutral					
3/0 AAAC (7)	250	4	26.3	26.8	2870

Joint Use

Joint Use Cable	Ruling Span (ft)	Diameter (in)	Weight (lbs/ft)	Attach A (ft)	Offset (in)	Attach B (ft)	Tension (lbs)	Description
1.00" CATV (No Tension)	250	1.00	0.34	20.6	1	20.6	0	

Span: 2 **Span Length (ft): 157** **Direction: 201°**

Circuit: 1 3PH-TAN-Mod Ver-Wood Pole-45KV PC Hor-E-5.0.0 F1

Primary	Ruling Span (ft)	Offset (in)	Attach A (ft)	Attach B (ft)	Tension
568 ACAR (15/4)	250	21	36.8	37.3	4530
568 ACAR (15/4)	250	4	39.7	40.2	4530
568 ACAR (15/4)	250	20	34.1	34.6	4530
Neutral					
3/0 AAAC (7)	250	4	26.3	26.8	2870

Joint Use

Joint Use Cable	Ruling Span (ft)	Diameter (in)	Weight (lbs/ft)	Attach A (ft)	Offset (in)	Attach B (ft)	Tension (lbs)	Description
1.00" CATV (No Tension)	250	1.00	0.34	20.6	1	20.6	0	

Span: 3 **Span Length (ft): 160** **Direction: 90°**

Circuit: 1 1PH-DE-Vert-45KV Susp Poly-E-5.1.0 F4

Primary	Ruling Span (ft)	Offset (in)	Attach A (ft)	Attach B (ft)	Tension
1/0 AAAC (7)	250	0	31.8	32.3	1890
Neutral					
1/0 AAAC (7)	250	0	25.3	25.8	1890

Joint Use

Joint Use Cable	Ruling Span (ft)	Diameter (in)	Weight (lbs/ft)	Attach A (ft)	Offset (in)	Attach B (ft)	Tension (lbs)	Description
0.75" CATV (No Tension)	250	0.75	0.27	20.6	1	20.6	0	

PoleForeman - Pole Loading Analysis Report

License: Alpine Communication Corp

Version 7.4.17

SERVICES

Service	Type	Length (ft)	Direction	Attach (ft)	Tension
1/0 AL TPX SERV	Power	35	265°	26.3	240
1/0 AL TPX SERV	Power	31	336°	26.3	276

EQUIPMENT

Equipment	Weight (lbs)	Attach (ft)	Direction
50 KVA	582.0	26.9	21°

LIGHTS

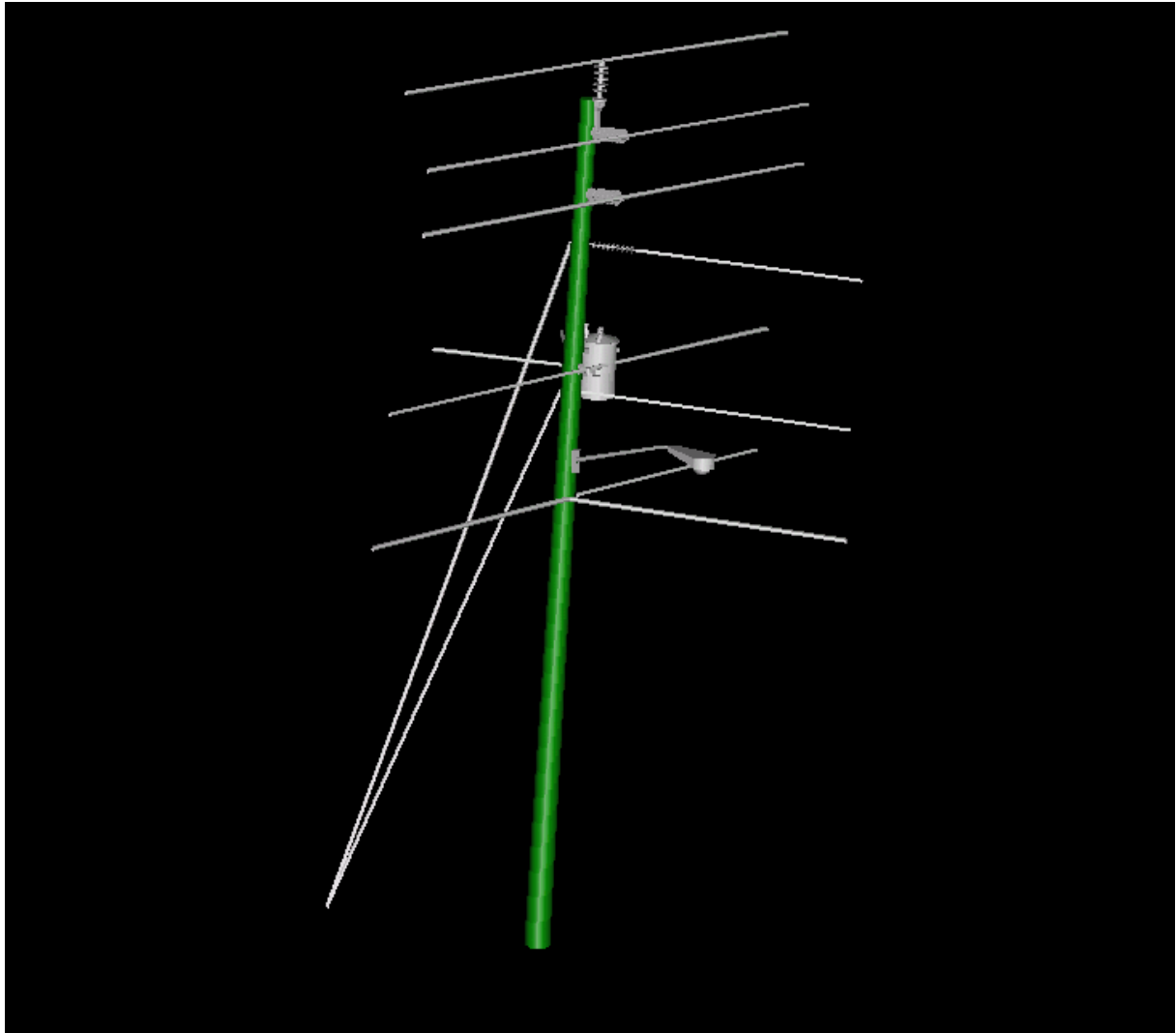
Light	Bracket	Weight	EPA	Attach	Direction
150-400W Cobra	6 FT Bracket	66	0.87	22.6	116°

PoleForeman - Pole Loading Analysis Report

License: Alpine Communication Corp

Version 7.4.17

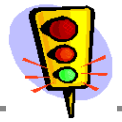
Solid Model View



PoleForeman - Pole Loading Analysis Report

License: Alpine Communication Corp

Version 7.4.17



POLE LOADING DATA

Pole: 35/5 Wood (Wood-Cylindrical)

Soil: None

Pole Loading

NESC Edition: 2012

Rule 250B: Temp=30F, Wind=9 psf, Ice=0 in

Horizontal: 78% (250B)

Loading District: Light

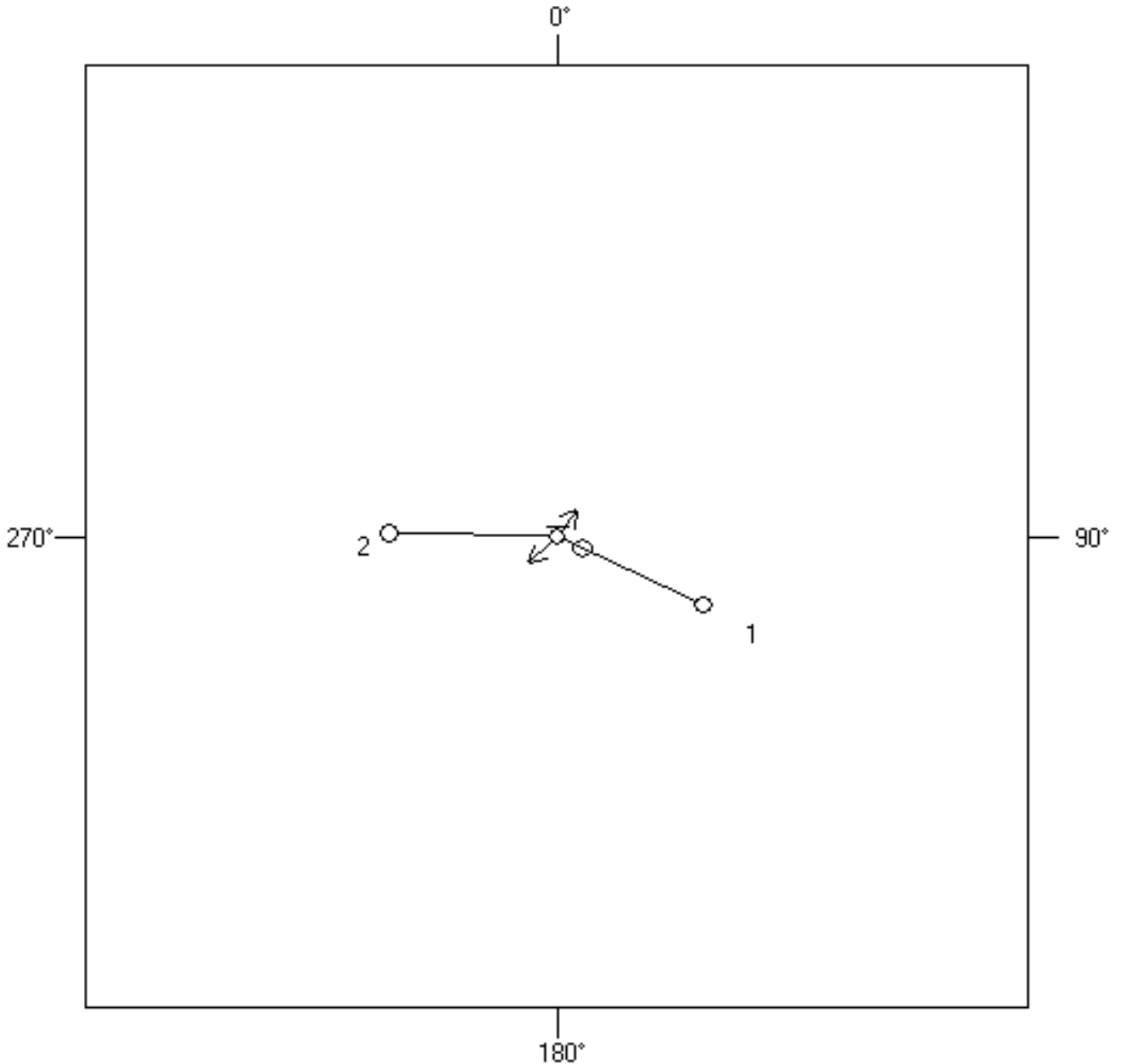
Vertical: 25% (k=0.70)

Construction: Grade B

POLES

Pole #	Length (ft)	Depth (ft)	Elevation (ft)
0	35	6	0
1	35	6	0
2	35	6	0

POLE LINE TOPOLOGY



PoleForeman - Pole Loading Analysis Report

License: Alpine Communication Corp

Version 7.4.17

GUY STRAND DATA

Anchor	Strand	Attach	Length	Direction	Tension	Strength	Loading
1	9/16" EHS	26.0'	10'	0°	7,854	30,330	26%

ANCHOR DATA

Anchor	Rod	Anchor	Soil	Tension	Rod Strength	Anchor Strength
1	None	None	None	7,854	0	0

SPANS

Span: 1 Span Length (ft): 154 Direction: 115°

Circuit: 1 1PH-TAN-Vert-Wood Pole-35KV PT Poly-E-21.0.0 F2

	Ruling Span (ft)	Offset (in)	Attach A (ft)	Attach B (ft)	Tension
Primary 1/0 ACSR (6/1)	250	19	30.3	30.3	1600
Neutral 1/0 ACSR (6/1)	250	-12	22.3	22.3	1600

Joint Use

Joint Use Cable	Ruling Span (ft)	Diameter (in)	Weight (lbs/ft)	Attach A (ft)	Offset (in)	Attach B (ft)	Tension (lbs)	Description
1.00" CATV (No Tension)	250	1.00	0.34	17.0	1	17.0	0	

Span: 2 Span Length (ft): 160 Direction: 271°

Circuit: 1 1PH-TAN-Vert-Wood Pole-35KV PT Poly-E-21.0.0 F2

	Ruling Span (ft)	Offset (in)	Attach A (ft)	Attach B (ft)	Tension
Primary 1/0 ACSR (6/1)	150	19	30.3	30.3	1600
Neutral 1/0 ACSR (6/1)	150	-12	22.3	22.3	1600

Joint Use

Joint Use Cable	Ruling Span (ft)	Diameter (in)	Weight (lbs/ft)	Attach A (ft)	Offset (in)	Attach B (ft)	Tension (lbs)	Description
1.00" CATV (No Tension)	250	1.00	0.34	17.0	1	17.0	0	

SERVICES

Service	Type	Length (ft)	Direction	Attach (ft)	Tension
1/0 AL TPX SERV	Power	32	39°	22.3	267
1/0 AL TPX SERV	Power	37	226°	22.3	222

EQUIPMENT

Equipment	Weight (lbs)	Attach (ft)	Direction
50 KVA	582.0	21.3	115°

PoleForeman - Pole Loading Analysis Report

License: Alpine Communication Corp

Version 7.4.17

Solid Model View

