

EQUIPMENT EVALUATION FORM

ABC Cable

Telecommunications Carrier

Date submitted by Telecommunications Carrier
Date received by FPL

February 12, 2020
February 12, 2020

I. Equipment to be Installed (Working Equipment to be installed and this document must accompany one another for the FPL evaluation)

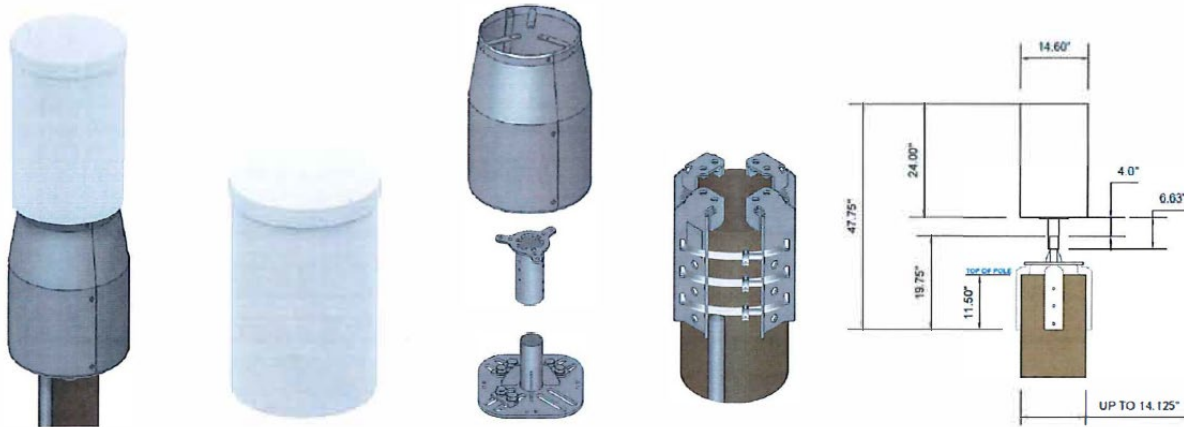
Brief explanation of equipment to be installed: Amphenol omnidirectional antenna w/associated mounting hardware, coaxial cables, ground wire and u-guard

Maximum Exposed Projected Area for Wind Calculations: 2.7 square feet

Dimensions of Antenna including bracket: 47.75" x 14.6"

Weight of Antenna Assembly: 97 lbs

Pictures of Equipment to be installed:



Pole Top Attachments: Include copies of all equipment/material certifications that establish this piece of equipment meets FPL's specifications for pole top attachments.

II. FPL's Evaluation

<input checked="" type="checkbox"/> Equipment Approved <input type="checkbox"/> Equipment Denied Reason for denial or additional conditions of attachment:	Usable Pole Space (Includes six inches of clearance above and below the attachment): Usable Space <u>5 Feet</u>
--	--

FLORIDA POWER & LIGHT COMPANY

By: John Doe

Title: Principal Engineer

III. GENERAL CONDITIONS

1. Approval under this exhibit by FPL grants the Licensee the right to request permission to attach this identical equipment to FPL Distribution Poles using Exhibit A.
2. Unless FPL specifies otherwise, Licensee is not required to resubmit this equipment for re-approval.
3. Except for approved pole-top applications, all attachments are to be made below the communication worker's safety space on distribution poles only.
A copy of this document must be included with each permit (Exhibit A) submitted by the Licensee requesting attachment to FPL distribution poles.

Initial Review Process. Prior to construction or installation of Licensee's Equipment on FPL Distribution Poles, Licensee at its sole cost and expense shall submit to FPL for FPL review a set of design plans and specifications for each Device or piece of equipment that Licensee proposes to install on FPL's Distribution Poles (collectively the "Plans") together with an actual working Device of each type that Licensee proposes to attach to FPL Distribution Poles under this Agreement. Licensee shall complete and submit to FPL with the Plans and Device the form attached hereto as Exhibit "C". Licensee acknowledges and agrees that FPL may test each such Device submitted by Licensee on FPL's Facilities. Within forty-five (45) days of FPL's receipt of the Plans, the Devices, the Exhibit "C" form completed by Licensee, and Licensee's Equipment Evaluation Fee payment, FPL will either: (i) approve Licensee's Device for attachment providing Licensee with written confirmation of said approval and identifying the Device on the list of approved Equipment attached as Exhibit "C" to this Agreement, (ii) deny Licensee's request to attach the Device or Equipment tested setting forth the reasons for the denial, or (iii) advise Licensee that FPL will conditionally approve Licensee's request for Equipment Attachment provided that Licensee fulfills certain equipment-related requirements. If the Device is approved, FPL will send the Licensee an "approved" Initial Review Evaluation Form in the form of Exhibit C. A copy of the "approved" form is to be included with each Pole Attachment Permit Application the Licensee submits to FPL or FPL's Pole Attachment Permit Application vendor.

For pole top attachments, include copies of all equipment/material certifications with this exhibit that establishes this piece of equipment meets FPL's specifications for pole top attachments.

At the conclusion of the Initial Review Process, FPL will provide Licensee and any other person or entity designated by Licensee on Exhibit "C" to receive such notice, with the specific information as to where and when the Devices tested may be retrieved by Licensee. Licensee's Devices that remain on FPL property for more than sixty (60) days after conclusion of the Initial Review Process will be deemed abandoned and may be disposed of by FPL, without liability to Licensee, as it deems appropriate.

Nothing herein guarantees approval of Licensee's Devices for attachment to FPL Distribution Poles or that any permit applied for under this Agreement will be granted. Each permit will be evaluated on its own merits.

Licensee acknowledges and agrees that FPL is not staffed to evaluate Licensee's Devices as a business, and that forty-five (45) days will be required for the evaluation of each Device type arrangement submitted by Licensee (the "**Evaluation Period**"). If the Licensee should submit more than one Device for evaluation, the Evaluation Period for the second Device type will not begin until the evaluation of the first Device is completed. The Evaluation Periods for additional Devices submitted by Licensee for FPL evaluation will follow the same pattern, that is, that the Evaluation Periods for review of these Devices will not run simultaneously, and will not begin until review of a Device then under review by FPL (or prioritized by Licensee) is completed. It is the Licensee's responsibility to prioritize the evaluation of its Devices prior to submitting the Device/Equipment review request to FPL. If at any time, the Licensee's priorities change, Licensees shall notify FPL in writing and FPL will endeavor to accommodate the Licensee's request.